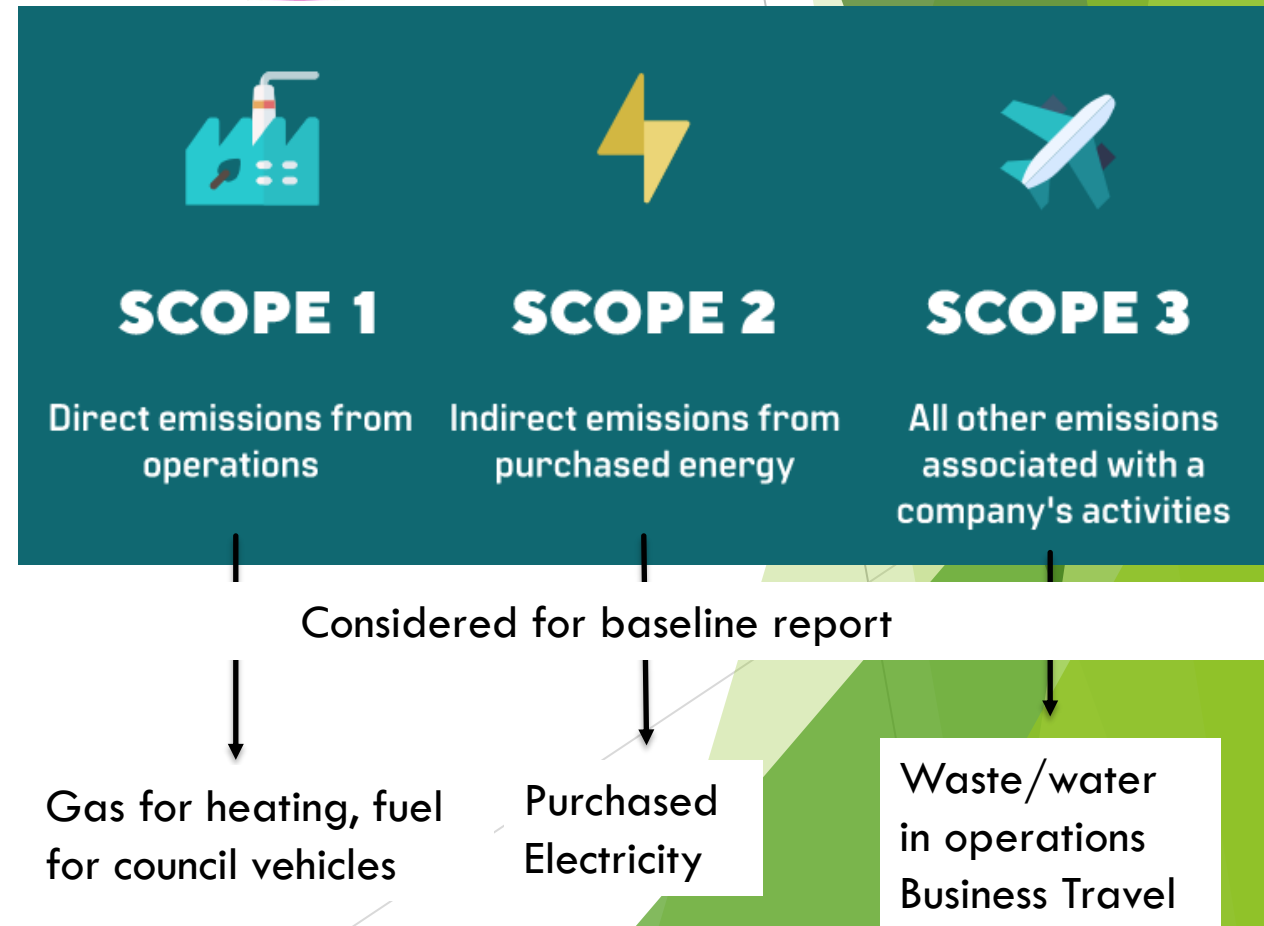


Carbon reporting baseline study



- Baseline study in partnership with Melton Borough Council
- Consultant - APSE Energy
- To understand our scope 1,2 & 3 emissions
- Carbon reporting from baseline year **2019/20**
- **Outputs used to -**
 - set emission reduction targets
 - Develop/prioritise actions
 - improve future monitoring
- **Annual monitoring proposed**



Carbon reporting baseline study - progress

1. The **data gathering** process has been **challenging** because of its disparate nature with different providers and energy usage data required for over 120 sites

Dec 21

2. Access is **not viable** to all data – such as emissions from **purchased goods and services** (Scope 3) which remain the toughest to measure and tackle for organisations

3. However, most data **required for the baseline has been collected** including the large amounts of British Gas electricity data and that from Corona gas.

Feb 22

4. **Data still required** - energy data from leased assets – Everyone Active

April 22

5. **Baseline data collated** on spreadsheet for OWBC

June 22

6. **APSE will analyse data to produce a baseline carbon footprint** for the council's operations

7. **Going Forward** - with **subsequent emissions reporting** further data is expected to be added to provide a more **complete carbon footprint** for council operations